

Plaza Theatrical Productions, Inc.

34 Forest Avenue Lynbrook, NY 11563 (516) 599-6870

PRODUCTION OF

**A
CHARLIE
BROWN™
Christmas**



By Charles M. Schulz

Based on the television special by Bill Melendez and Lee Mendelson

Stage adaptation by Eric Schaeffer

By special arrangement with Arthur Whitelaw and Ruby Persson

© PNTS

Study Guide

Table of Contents

Synopsis/p.3

Activity Ideas (PreK-8th)/p.4

Snoopy's Doghouse Décor /p.5

The Bully Blues/p.6

Ice Rink Science/p.7

Worksheet Keys/ p.8

A Brief Synopsis

Charlie Brown just can't seem to find the holiday spirit.

With all of the hustle and bustle, the focus on getting instead of giving, and the demands of his family and friends- Charlie Brown is sick of a commercialized

Christmas!

Join the Peanuts gang in beating their holiday blues by bringing to life the beloved 1965 Charles M. Schulz classic.

The 50th anniversary of the animated television special reminds us that Christmas isn't just about presents, trees, and letters to Santa; it's about celebrating traditions with the ones you love.

CHARLIE'S TREE (Pre K-3)

Charlie chooses a small, thinning tree from the lot and decides it just needs a little love to become a beautiful Christmas tree. On a separate sheet of paper, draw a tree. Then, cut pictures of things you love out of magazines and glue them onto the tree. Be creative! Share your creations with your class when you are finished!

Materials Needed:

- Paper
- Crayons, colored pencils, markers
- Magazines
- Safety Scissors

AMERICA: Then and Now (4-6)

The television special, *A Charlie Brown Christmas*, aired in 1965. A lot of things were different 50 years ago, but a lot of things were the same! Divide into groups and complete the following activity to compare America in 1965 and America today.

Materials Needed:

- Paper
- Access to research materials (books, internet, etc.)
- Create a timeline with 5 major events, starting with the premier of *A Charlie Brown Christmas* in 1965 and ending in 2016
- Draw a Venn Diagram of the years 1965 and 2016. Where the circles overlap, write some things that both periods have in common
- Based on your timeline and your Venn diagram, what would you have liked about living in 1965? What do you like about living in 2016?

Holiday Traditions Around the World (7-8)

Different cultures, families, and communities celebrate different holidays. What holiday do you celebrate with your family? What traditions do you have? Research the historical origins of the holiday you celebrate, and write a paragraph long essay. Share what you found in small groups when you are finished.

Materials Needed:

- Paper
- Access to research materials (books, internet, etc.)

SNOOPY'S DOGHOUSE DÉCOR

Snoopy is set on winning the doghouse decoration contest this year! He's planning his budget, and needs some help. Read and solve the word problems below. Use your basic math skills to find the solutions, and be sure to check your work.

BONUS: On the back, create your own word problem about the cost of Snoopy's decorations, and provide the solution!

1.) Snoopy wants to paint his house red and green. Red paint is \$5.75 a quart, and green paint is \$4.50 a quart. Snoopy needs two quarts of red paint, and one quart of green. What will be the total cost of the paint?

2.) Snoopy needs to buy some holiday lights to trim his house. He can only spend \$25.00 on lights, and each strand costs \$6.25. How many strands of lights can he afford? (4)

3.) For the final touch, Snoopy needs a flag! He wants the flag to be $\frac{1}{4}$ the height of his house. His house is 40 inches tall. How tall should the flag be? (10 in)

THE BULLY BLUES

Have you ever been bullied? Have you ever seen bullying taking place and weren't sure what to do about it? Have you ever been the bully?

Throughout the show, Charlie Brown is bullied for his ideas about how he thinks Christmas should be celebrated. As we saw at the end, the holidays can be celebrated in many different ways and we should never bully someone because their traditions are different from our own.

This worksheet is an opportunity for you to write about bullying from your point of view. We encourage you to talk with your teachers, parents and counselors, to discuss ways of stopping bullying in your school. What you write on this page could be the start.

What is bullying? Use your own words and observations.

Describe a time when you witnessed someone being bullied.

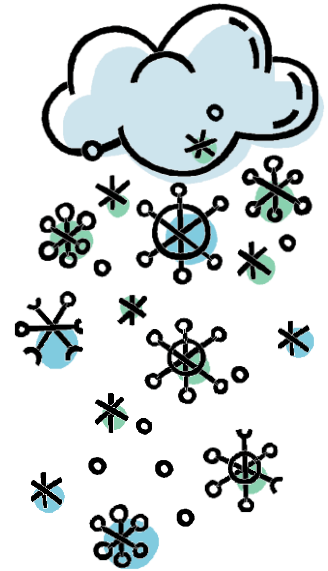
What are three kinds of bullying that you see happening at your school?

Ice Rink Science

The Peanuts Gang (and our actors!) love to ice skate; you may have noticed that there was ice-skating during the show! Although we used props and some real theater science to bring this scene to life, the process of water becoming ice happens often during the winter.

Below are some examples of physical and chemical changes. You must circle “P” for Physical Changes, or “C” for Chemical Changes.

Refer to the definitions on the right to tell the difference.



- P C 1) A piece of paper is crumpled up and thrown in the trashcan.
- P C 2) Eggs are cooked on the stove.
- P C 3) A wooden log burns in a fire.
- P C 4) Ice melts.
- P C 5) A fork and knife are used to cut a holiday turkey.
- P C 6) A juicy steak is digested in the body after being eaten.
- P C 7) Cookie dough is baked in the oven to make cookies.
- P C 8) A puddle of water evaporates and turns into water vapor.
- P C 9) A window was broken because a rock was thrown through it.
- P C 10) A banana browns because it sat on the counter too long.

Physical change:

Any change in a substance that does not produce a new or different substance.

Chemical change:

A change in a substance that produces a totally new and different substance.

WORKSHEET ANSWER KEY

SNOOPY'S DOGHOUSE DÉCOR

1.) $\$5.75 \times 2 + \$4.50 = \$16.00$

2.) $\$25.00/4 = \6.25

3.) $\frac{1}{4}$ of 40 inches = 10 inches

ICE RINK SCIENCE

1.) P

2.) C

3.) C

4.) P

5.) P

6.) C

7.) C

8.) P

9.) P

10.)

